



Caulfield
grammar school



Junior School Life
Early Learning to Year 6

Acknowledgement of Country



Hello friends.
Hello me.

Hello LAND.

Hello sea.

Hello SKY.

We thank the people
of the KULIN Nation
for letting us share
the land promise
to take care of it,
the people
and animals too.

Written by Olivia

Acknowledgement of Country.

Caulfield Grammar School acknowledges the traditional custodians of the land on which we gather, teach and learn, the Bunurong and Wurundjeri peoples of the Kulin Nation, and the Mirarr peoples in the Northern Territory. We pay our respects to Elders past and present.

A message from our Principal.

Each child is known and heard at Caulfield Grammar.

Choosing a school is one of the first big life decisions you make for your children. It's a choice that will influence the friendships they make, the education they receive, and in many ways shape the people they grow up to become.

At Caulfield Grammar School, each child is known and listened to. They are part of a close community which extends beyond our students and employees to their families.

We are an elite school, but take pride in not being elitist. So, while our academic results are always among the very best, that's not why we exist. Our broad and balanced programs are designed to give children opportunities to discover all the exciting things life has to offer – inspiring their curiosity and creativity and leading them to create their own path. What we call developing a 'Mind for Life'.

In a nurturing and encouraging environment, we provide our students with the security and comfort to be themselves – so they can thrive and grow up with the confidence to follow whatever direction they choose.



Ashleigh Martin, Principal



Our Purpose, Vision and Values.

Our Purpose.

To enable quality learning every day in every experience for every learner for life.

Our Vision.

We aim to be a leading internationally recognised co-educational school, fostering responsible global citizens.

Our Values.

We are one school inspired by our Anglican tradition and are committed to modelling our values for all learners. We celebrate these five values, which guide our decisions, philosophies and behaviour.

Our Student Behaviours.

PURSUE *Excellence*

An ongoing commitment to individual and collective growth through perseverance, collaboration and resilience.

Our Expectations

We will

- ✓ Support the personal growth and achievements of each other
- ✓ Strive to be our best, reflect and grow
- ✓ Persist and learn from our setbacks
- ✓ Respect and celebrate the drive to succeed
- ✓ Be patient and know that progress takes time

We won't

- ✗ Let our failures define us
- ✗ Be afraid to take risks
- ✗ Give up on our goals
- ✗ Ignore useful feedback

INSPIRE *Creativity*

Imagining and initiating new possibilities and turning these into practical outcomes.

Our Expectations

We will

- ✓ Build on old ideas with new and critical thinking
- ✓ Push ourselves to think outside the box
- ✓ Learn from our mistakes and turn them into opportunities
- ✓ Encourage others to reach their creative potential
- ✓ Give others feedback to improve

We won't

- ✗ Have a fixed mindset
- ✗ Always stay in our comfort zone
- ✗ Judge or criticise others for their creativity
- ✗ Force people to think in certain ways
- ✗ Give up on our ideas

THRIVE *Together*

As a community, take responsibility for personal wellbeing while positively impacting on the wellbeing of others.

Our Expectations

We will

- ✓ Work together to live by our values every day
- ✓ Collaborate with each other to promote optimism, health and wellbeing
- ✓ Listen to understand
- ✓ Celebrate each other's strengths and weaknesses
- ✓ Promote safety and belonging

We won't

- ✗ Exclude others
- ✗ Let anyone stand alone
- ✗ Let others down
- ✗ Force opinions on others

EMBRACE *Diversity*

Authentically valuing the richness of difference, appreciating and recognising that all perspectives contribute to our community.

Our Expectations

We will

- ✓ Learn from and be open to other perspectives
- ✓ Understand that our actions have an impact on others
- ✓ Respect others' opinions
- ✓ Ensure everyone is heard
- ✓ Actively understand and celebrate what makes others unique

We won't

- ✗ Behave in a way that makes others feel uncomfortable
- ✗ Be afraid of being who we are
- ✗ Discriminate or be judgemental

LIVE *Wholeheartedly*

Engaging in life with purpose, courage, passion, humility and in service with others.

Our Expectations

We will

- ✓ Show kindness and empathy
- ✓ Learn with and from the greater community
- ✓ Have brave and courageous conversations
- ✓ Be ok if things don't go our way and ask for help when we need it
- ✓ Try new things with an open mind

We won't

- ✗ Ignore ours or others' values
- ✗ Put ourselves or others down
- ✗ Throw away opportunities
- ✗ Neglect our passions

A warm and inclusive community.

More than a place of learning, this is a place of belonging.

We believe a school should provide far more than an education. It should be an inclusive place where children feel that they belong. When they have an emotional connection to their environment, teachers and peers, children can grow and thrive.

Offering co-educational Early Learning Centres (ELC) to Year 12, Caulfield Grammar provides continuity of care throughout the entire school journey and a strong school community element.

Children benefit from the offerings of our large school, while learning within smaller and unique campus communities that foster curiosity, a love of learning and that sense of belonging. Our Junior Schools are located in Wheelers Hill, Malvern and, from 2027, Caulfield at our new Shelford Campus. Students at Wheelers Hill Campus have a continuous learning experience from Early Learning through to Year 12. Malvern and Shelford Campus students continue learning at Caulfield Campus for their secondary years. A program of residential student immersion experiences is offered beyond the campus gates.

	Wheelers Hill Campus	Malvern Campus	Caulfield Campus	Shelford Campus launching 2027	Student Experiences
ELC	✓	✓	—	—	—
Junior	✓	✓	—	✓ Years 4-6	Yarra Junction – Education Outdoors Camps
Secondary	✓	—	✓	—	Yarra Junction – Education Outdoors Year 9 Kakadu Program Year 10 Odyssey Program Tours

We are united as one values-led school. We promote meaningful cross-campus interaction, with students enjoying opportunities to learn collaboratively and participate in combined events like Junior School camps in Years 3-6 and interschool APS Sport competitions in Years 5-6.

A strong connection with parents, guardians and caregivers is also a key part of our School. We work in partnership with families to support each child’s needs, emotionally and academically. When your child joins Caulfield Grammar School, as parents you are joining a community too. You will be supported and involved in events, make connections with teachers, and form long-lasting friendships with our wonderful families.

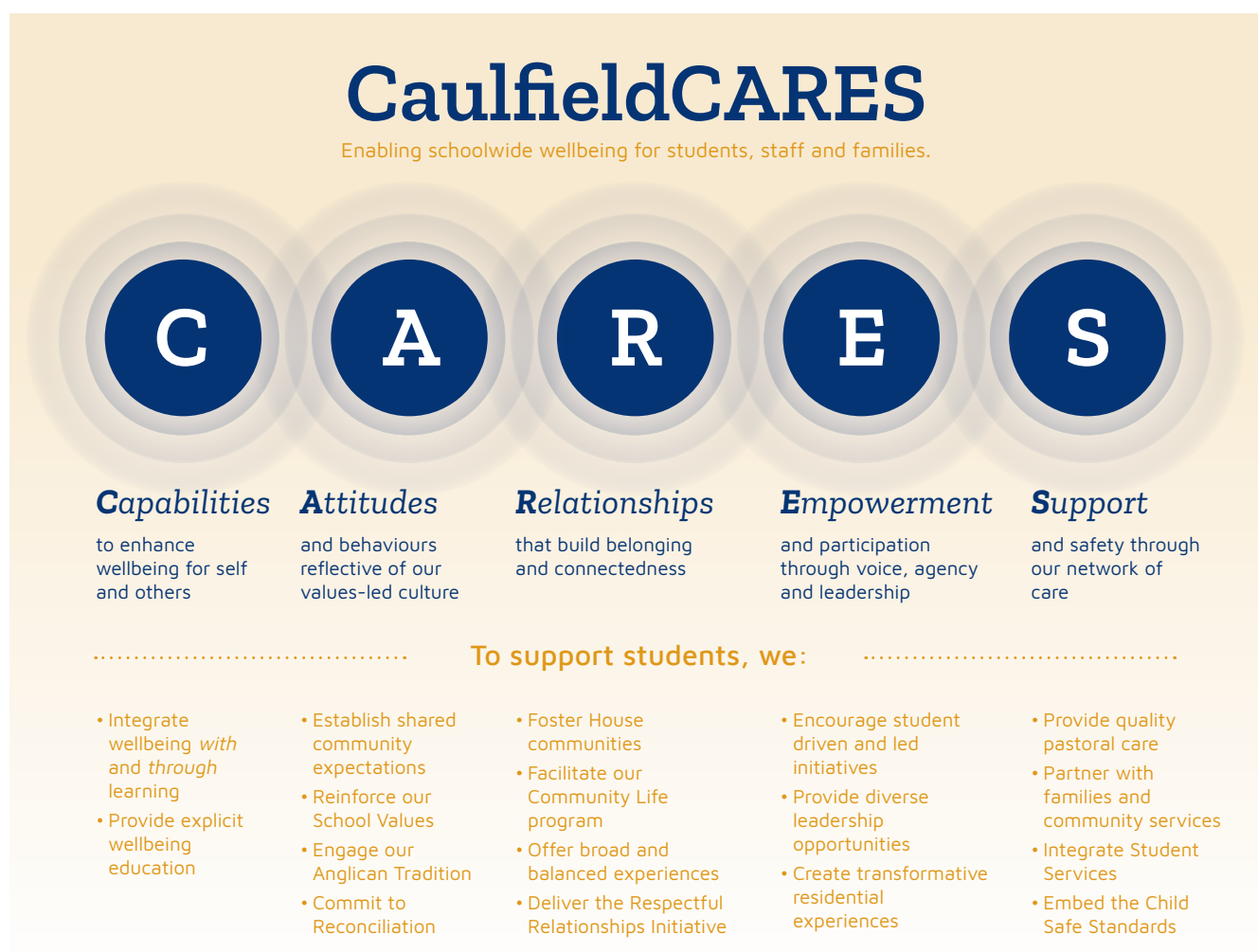


Nurturing well beings.

Our approach to wellbeing in the junior years equips our young learners with the social and emotional toolkit they need to feel good, function well, relate better with others, and navigate life's changes and challenges.

A safe and inclusive environment is at our core, where every child feels known, heard, valued and supported.

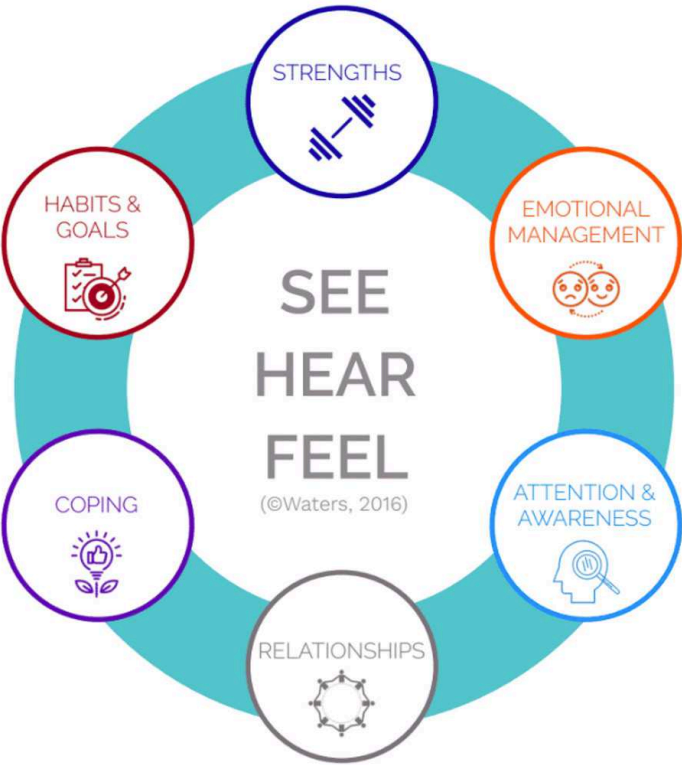
Our school-wide approach to wellbeing is articulated through CaulfieldCARES. This guiding framework supports a positive school climate and enables a thriving community. CaulfieldCARES moves beyond individual program offerings and practices and embraces the school environment as a vibrant ecosystem.





From the moment your child joins our community, we nurture their social and emotional capabilities. This prioritisation of wellbeing extends beyond the daily interactions of staff, students and families, and is further highlighted within the curriculum and through year-level programs and presentations.

Learning is enhanced through a strengths-based approach, trusting and meaningful relationships, playful engagement and immersion in nature. With the support of our dedicated Student Wellbeing Team, our teachers are equipped to respond to and proactively build student wellbeing.



We recognise the intrinsic link between wellbeing and learning. Wellbeing positively influences student learning outcomes, and success in learning enhances student wellbeing. Integrated into our quality lesson design is our Visible Wellbeing™ approach. Developed by Professor Lea Waters (PhD), Visible Wellbeing combines the science of wellbeing with the science of teaching and learning. By incorporating the practices of See, Hear and Feel we make wellbeing more visible and accessible in all learning spaces. Through utilising the SEARCH framework, we intentionally build the six pathways that lead to positive functioning.

Outstanding multi-campus facilities.

Students have access to an extensive range of resources and learning environments.

Many of the benefits of attending Caulfield Grammar School are not always visible at first glance – like the way learners develop a view of the world, build confidence, or develop critical and creative thinking. Other benefits, like our outstanding indoor and outdoor learning environments and facilities, are much more visible.

Our beautiful Early Learning Centres are where many students begin their journey at Caulfield Grammar School, with our passionate educators equipped to provide our youngest learners with the very best start.

Our learning programs are guided by the principles and practices of the International Baccalaureate Primary Years Programme (IB PYP).

As one school with multiple campuses, Caulfield Grammar offers a broader range of learning experiences and resources than many Australian schools.



Take a
Campus Facilities
video tour





WHEELERS HILL JUNIOR CAMPUS

Set on a hillside with views to the Dandenong Ranges, Wheelers Hill Campus was Caulfield Grammar School's first co-educational campus, with girls enrolled since its opening in 1881.

Our world-class Junior School includes a new award-winning learning development. Offering innovative and future-focused learning environments for 490 students, curiosity and creativity are promoted and exploration encouraged in areas of personal interest.

Students love to spend time reading, participating in lunchtime clubs or relaxing in the beautiful reading garden of our library, shared across our Junior and Secondary schools.

Our 650-seat professional theatre is in constant use for assemblies, music concerts, special events and theatre productions such as 'The Lion King'. Students make great use of the Campus swimming pool during swimming lessons and Sport training, as well as at our annual House Swimming Carnival. The gymnasium and basketball courts are well utilised, along with the lush-green Campus ovals and many netball and tennis courts. There's even a rock-climbing wall. Our nature play zone, Tinker Alley, is a popular outdoor area where children can engage in STEM-based play that develops their creativity, curiosity and resourcefulness.

Our state-of-the-art Early Learning Centre incorporates best-practice play-based learning and is right next door to Jells Park, which our ELC students visit weekly.

MALVERN CAMPUS

National Trust-listed Valentines Mansion lies in the heart of our beautiful Malvern Campus and is home to the stunning ballroom and community spaces. 430 students learn in a range of classrooms and specialist learning environments for STEM and Music.

Various other learning environments around the grounds include a specialist visual arts space, a light-filled, modern library, and distinct playground areas. The Cottage Garden is nestled at the front of the campus, The Patch is home to our veggie garden and much-loved resident chickens, and there is a Wominjeka adventure playground. Wominjeka means 'Hello/Welcome' in the language of the Wurundjeri people. These play spaces sit alongside our oval, cricket nets, two tennis courts and gymnasium and are open to all students, encouraging friendships, role modelling and interaction across all year levels.

Students also have access to nearby Caulfield Campus' world-class Caulfield Aquatic Centre, gymnasium and professional theatre.

SHELFORD CAMPUS

Opening in 2027, Shelford Campus will be a purpose-designed learning environment for students initially in Years 4 to 6, with plans to expand to a full Prep to Year 6 offering in subsequent years. The campus will feature remodelled classrooms, creating flexible learning spaces that encourage collaboration, creativity, and independent learning. These adaptable environments will support a range of teaching and learning styles, ensuring students can engage in hands-on, inquiry-based education.

In addition to dedicated learning spaces, Shelford Campus will include a state-of-the-art Food Technology Centre, modern STEM classrooms, a 300-seat theatre, and extensive sports facilities.

Situated just 800 metres from Caulfield Campus, Shelford students will benefit from convenient access to the school's world-class facilities, including a competition-grade Aquatics Centre, a fully equipped gymnasium, and a professional theatre.

The campus is also home the School Innovation and Learning Centre (SILC) a schoolwide hub for innovation where students from across all Caulfield Grammar School campuses come to engage in industry-informed learning experiences and the latest technology as well as diverse extracurricular opportunities and academic excellence programs.

Cultivating capable and curious learners.

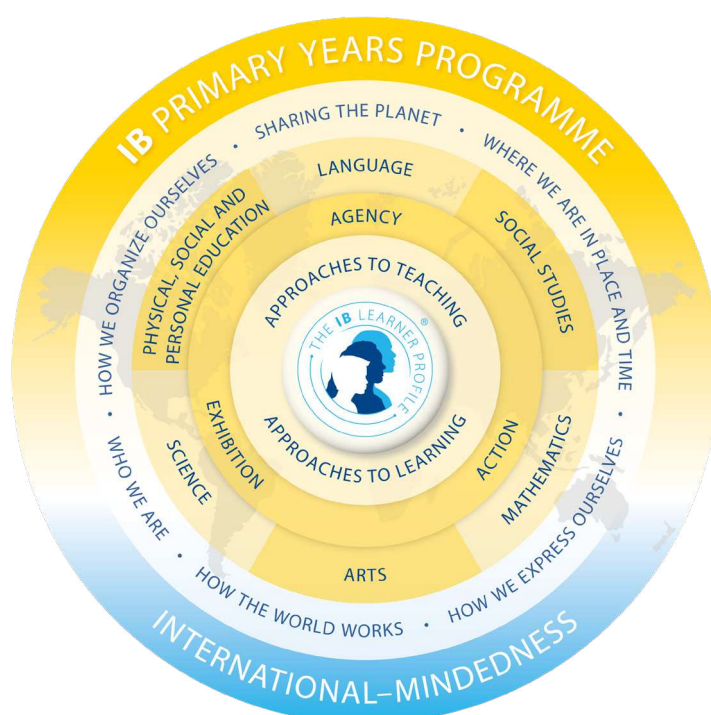
Our broad and balanced programs offer a wide variety of opportunities for children to discover what matters most to them.

At Caulfield Grammar School we do not believe in moulding our students to fit a particular system. We do the opposite – by moulding our system to each child so they learn and grow, no matter their starting point, in a way that best suits them.

We do this by employing highly skilled educators and offering a range of broad and balanced academic and co-curricular programs. We enhance the standard ACARA (Australian Curriculum, Assessment and Reporting Authority) curriculum by embedding the International Baccalaureate Primary Years Programme (IB PYP) framework and other research-based approaches into our daily learning and teaching practices.

Through this, your child will discover areas that spark their interest and curiosity. We believe in developing the whole child – not just their knowledge, but their interests, attitudes and values. We want them to be curious, confident and critical thinkers, with the ultimate goal of being positive global citizens who can forge their own pathway and leave our School to contribute with passion and purpose.

Our inquiry approach to learning is underpinned by students gaining a strong core knowledge of literacy and numeracy. The motivation that comes from mastering these disciplines enables each child to feel confident in contributing to collaborative problem solving. This confidence provides a springboard for them to delve into the rich concepts inside the units of inquiry they investigate.





We believe students learn best when they understand the 'why' and 'how', not just the 'what'.

One of the key differentiators of our Junior School is our approach to teaching and learning. We focus on the development of conceptual understandings and transdisciplinary skills – helping students understand core concepts so they can apply them in other areas. This not only helps in grasping ideas, it also encourages students to extend their thinking as they build on what they have learned.

An example of conceptual understanding in practice would be a student's ability to transfer their understanding of place in Mathematics (place value of numbers) to the broader concept of place and belonging in other subjects. In Humanities and the Social Sciences, this could take the form of learning about patterns of, and reasons for, migration. Through this transdisciplinary approach, students learn how to transfer and apply knowledge to all areas of their lives.



Multiple pathways for each child.



Our broad and balanced pathways mean that no matter whether your child's passions and strengths are academic, musical, sporty, theatrical or still being discovered, they will be supported to find success, joy and fulfilment at School.

We importantly provide opportunities for learning and enjoyment through participation, along with supporting elite pathway aspirations, in areas of passion for each student.



COMMUNITY LIFE

Community Life is a curriculum of wide-ranging learning experiences that build community connectedness, develop transferable life skills and provide pastoral support for all students. In the Junior Schools, dedicated sessions for all members of our community provide the opportunity to participate in Assemblies, Chapel, Special Events, Buddies, House activities, student leadership development and experiences to develop social and emotional learning.

MUSIC

Classroom Music is taught at each year level from Early Learning to Year 6 with students engaged in many enriching and unique musical experiences. Singing is used as the fundamental vehicle for musical development. All students are involved in a comprehensive and engaging instrumental program, learning a string instrument at Year 2 and either a wind, brass or percussion instrument at Year 5. A wide range of opportunities exist to join a music group, choir, ensemble, or music production. Private instrumental lessons are available and taught by specialist teaching staff. Students are given the opportunity to perform on campus and in incredible concert venues around Melbourne throughout the year.

SCIENCE TECHNOLOGY ENGINEERING MATHEMATICS (STEM)

Our comprehensive STEM program reinforces the value we place on concept-based transdisciplinary learning. Specialist STEM teachers assist students and teachers to build their knowledge and skills – through both classroom units of inquiry and stand-alone learning experiences for all ELC to Year 6 classes. Our students also participate in a range of STEM programs, events, competitions, and extension opportunities to ensure

STEM is at the forefront of our learning program, providing impactful and varied opportunities.

HEALTH, PHYSICAL EDUCATION AND SPORT

Health and PE classes reflect our commitment to developing the mind-body connection. They help students learn essential human character traits like courage, humility, collaboration and self-confidence. Through our House Sport program, which includes House Swimming, Athletics and Cross Country carnivals, along with participation in Associated Public Schools (APS) interschool competition in the upper Junior years, students can further refine their sporting skills with the support and guidance of expert coaches.

APS competition begins in Year 5 and all students take part in four terms of Sport against other APS schools. Students experience a range of sports aimed at overall development and creating a connection with the Middle School Sport program.

DRAMA

Through integrated Drama sessions that extend what is already being learned in the classroom, specialist teachers provide students with opportunities to develop their confidence, communication skills and ability to collaborate. A range of performance opportunities are on offer throughout the year, culminating in annual theatrical productions for our Prep, Years 5 and 6 learners. When it comes to musical productions and drama, there are as many opportunities to be involved backstage as there are on the stage itself. Our productions are rigorous and focused, fun and inclusive.

VISUAL ART

Exploring the basic elements of art begins in Early Learning classes, with a specialist art teacher introduced from

Prep onwards. Art teachers carefully plan students' artistic learning journey throughout their schooling, so they are exposed to, and engage with, a wide variety of artists and artistic forms. At times, artists-in-residence work with learners to provide unique and diverse perspectives. Learners are encouraged to experiment with art mediums and processes to express their ideas and feelings.

MANDARIN CHINESE

We recognise that learning another language helps a child's social and cognitive development. Our core learning program is supplemented by a broad learning program, which includes Mandarin Chinese. Students take lessons with a specialist teacher from Early Learning and these can be continued right through to VCE level. The emphasis is on cultural understanding with a connection to real-life context. Students from Early Learning age undertake an immersion approach linking to what they are exploring in the classroom. As students move into more formal learning experiences, their learning is often linked to units of inquiry. Students are encouraged to ask questions about the Chinese language and culture and are supported as they research and work collaboratively to develop a deeper understanding. Comparisons are made from the English language to Mandarin and beyond as we develop international mindedness in our learners.

EDUCATION OUTDOORS

Our Yarra Junction Campus is a place where students explore their natural environment and are challenged to consider the effect of their actions and lifestyle upon it. Fond memories are formed from eye-to-eye encounters with newborn calves, to the triumph of achieving personal challenges, or the sheer joy of experiencing the Australian bush.

An Early Learning Centre where play and wonder live.

We believe all young children are creative, curious and capable, and learn best through play.

Our beautiful Early Learning Centres (ELCs) at Wheelers Hill and Malvern campuses are where many students begin their journey at Caulfield Grammar School, with our passionate educators equipped to provide our youngest learners with the very best start.

We have a phrase that sums up our philosophy: 'Children belong in the ELC and it belongs to them'.

This is so important to us. We want to provide safe, comfortable spaces where children are at the heart of everything and feel very much at home.

We create captivating environments that encourage play-based learning, with literacy, numeracy and more embedded in everyday experiences. This approach teaches children how to learn, not what to learn, laying the building blocks for school in a fun, interesting and engaging way.

Our unique Early Learning programs are guided by the principles and practices of the International Baccalaureate Primary Years Programme (PYP) and the Early Years Learning Framework, as well as inspired by the Reggio Emilia Approach® and Nature Pedagogy.

In our ELC, children have time to wonder, listen and play. We want to harness their curiosity and stimulate their imagination. Our educators are experts at doing this in a variety of creative ways throughout the day.

This variety continues throughout the week with specialist classes that include STEM, Mandarin Chinese, PE, Swimming (Pre-Prep), Library and Music. At the end of the learning week we finish with 'Free-range Fridays', where we throw open the doors to the Prep rooms and allow children to move between the rooms to explore and connect. This provides an opportunity for children to learn from their peers and also makes the transition into Prep and the Junior School years easier.

Our broad and balanced pathways mean that no matter what your child's interests and strengths are, they will be supported to find joy and fulfilment during their Early Learning years.



Learn more about
Early Learning



An ideal blend of nature and nurture.



Our campus environments connect children with nature.

Learning in nature is a wonderful way to gain an appreciation of the world and our role within it. We have close and regular access to neighbouring parks, providing children with outdoor spaces that promote creativity, curiosity and connection.

Jells Park, on the doorstep of our Wheelers Hill Campus, offers an abundance of nature and opportunities for exploration and adventure. Our own gates lead teachers and students into the Park. Jells Park has also influenced our campus environment, with outdoor spaces designed to connect children with nature.

At Malvern Campus, students enjoy the benefits of our resident wellbeing dog and free-range chickens. The beautiful green spaces of Central Park and Hedgeley Dene Gardens are just a short stroll away, and our students immerse themselves in the local community through regular visits to the gardens, sporting and APS events hosted at Central Park, and special year-level picnic outings.

Shelford Campus will embrace its natural surroundings through its nurturing kitchen garden program, allowing students to engage in the campus' fresh produce gardens and develop an appreciation for sustainability and nutrition. With access to outstanding on-site kitchen facilities, students will have the opportunity to grow, harvest and cook fresh produce, reinforcing connections between nature, food and wellbeing. Students will also venture beyond the campus to local green spaces, such as Harleston Park and Ripponlea Estate, further enhancing their understanding of the environment and their place within it.



Taking action on world issues at a local level.

We encourage children to think about how they want to improve the world.

With the inherent optimism in children, the Junior School years are an ideal time to inspire them to think about how to make the world a better place.

We value their input and actively seek it out when making decisions on school matters. Students have influenced areas like new play space design, uniform choices, furniture improvements and excursions.

By giving them choice and a voice, they feel a sense of ownership in the decision and naturally develop a desire to take action in areas that impact their world.

Children are encouraged to take ownership of their learning, ask meaningful questions and set goals. The inquiries conducted at all year levels provide real-life contexts to evoke student-initiated action. This commitment to action is highlighted in the final year of Junior School with all students participating in our Year 6 PYP Exhibition – a student-led inquiry into an area of interest to them. The Exhibition, supported by our units of inquiry from Early Learning to Year 6, has resulted in our School community taking their hearts, minds and action to a breadth of concepts such as sustainability, the environment, and social and cultural challenges.



Friendships for life.



The Junior School years not only lay the foundations for secondary school, they also provide the beginnings of lifelong friendships.



Establishing meaningful relationships is one of the most important skills humans develop. But it can also be challenging, especially as children, so every day we help them develop the skills they need to make positive friendships.

As an ELC to Year 12 school, the friendships your child makes in their junior years can continue with them through secondary school. This makes the transition to Year 7 an easier one. But more than that, it means relationships strengthen over the years, often leading to one of the most valuable gifts your child can have – lifelong friendships.

After our students graduate, the Caulfield Grammarians' Association (CGA) inspires lifelong connections and nurtures a large community of engaged alumni who attend reunions and networking events and join clubs.

The Lion King – Junior School students performed in one of our impressive 650-seat professional theatres, bringing 'Hakuna Matata' (meaning 'no worries') to life in spectacular fashion.





Caulfield
grammar school

Mind for life.

CAULFIELD GRAMMAR SCHOOL

CRICOS provider number 00136F
ABN 79 004 170 772

WHEELERS HILL CAMPUS

Early Learning to Year 12
74-82 Jells Road
Wheelers Hill VIC 3150
Admissions 03 8562 5222

MALVERN CAMPUS

Early Learning to Year 6
5 Willoby Avenue
Glen Iris VIC 3146
Admissions 03 9524 6333

CAULFIELD CAMPUS

Years 7-12, Boarding from Year 9
217 Glen Eira Road
East St Kilda VIC 3183
Admissions 03 9524 6333

CONNECT WITH US

cgs@caulfieldgs.vic.edu.au



@caulfieldgrammar



@caulfieldgs



@caulfieldgs



Caulfield Grammar School

Enrol and find out more at
caulfieldgs.vic.edu.au

